

The Spartan Way

Sierramont Spartans embody . . .

Sincerity

Perseverance

Acceptance

Respect

Trustworthiness

Authenticity

Nonviolence

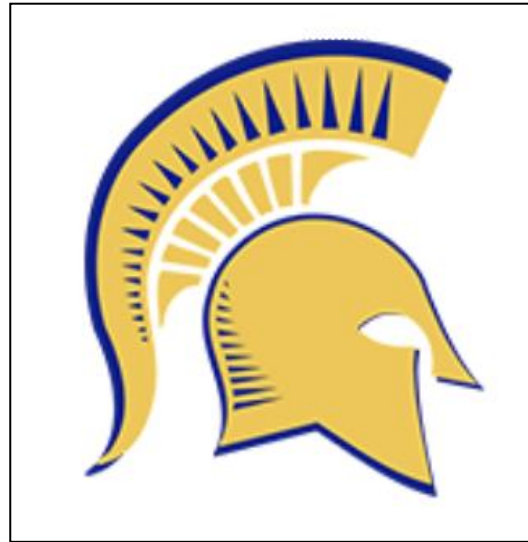
Patience

Resiliency

Inclusivity

Diversity

Empathy



Mission, Vision, Value



Mission

Our mission at Sierramont Middle School is to provide a learning environment that encourages critical thinking, self-awareness, and students understanding their relationship in their community and the world.

Vision

We envision a community where everyone feels respected, empowered, and celebrated for their uniqueness, background, identity, and contributions regardless of race, ethnicity, disability, LGBTQ+ identity, sexual orientation, religion.

Values

We value the wellbeing of our students and faculty by promoting positive self-esteem, mental health, accessibility, equity, and social justice.

SIERRAMONT MIDDLE SCHOOL

A California Distinguished School

3155 Kimlee Drive, San Jose, CA 95132



STUDENT AND PARENT HANDBOOK 2023-2024

Welcome to Sierramont Middle School “Home of the Spartans”. Sierramont is a progressive, student – centered middle school. The excellent and dedicated staff at Sierramont strives to provide a well-balanced standards-based education for our students. The primary goal of the entire staff at Sierramont Middle School is to provide each student with a strong foundation as they build their future. However, students are accountable in developing their own success. During their three years at Sierramont Middle School, each student is expected to work hard to prepare for each day.

The Student Handbook (Time Tracker) is designed as a guide to be used by students and parents. Please take the time to carefully review and discuss our rules, regulations, and other school information. Keep the Student Handbook (Time Tracker) in a three-ring binder so the information will be available for use in the future. All of our guidelines and expectations can be summarized in three simple rules: **Take care of yourself, take care of others, and take care of our school.** If your behavior matches these three rules, you will have a successful experience at Sierramont.

This time-tracker belongs to: _____ Homeroom: _____

SIERRAMONT MIDDLE SCHOOL

A California Distinguished School

HOME OF THE SPARTANS!

Colors: Blue and Gold

CLASS SCHEDULE

	Mon. Tue. Wed. Fri.	Thursday	Early Dismissal Wednesdays
<u>PERIOD</u>	<u>SCHEDULE</u>	<u>SCHEDULE</u>	<u>SCHEDULE</u>
First Bell	7:55 AM	7:55 AM	7:55 AM
HR	8:00 - 8:05	8:00 - 8:11	8:00 - 8:05
1st	8:08 – 9:03	8:14 - 8:53	8:08 - 8:53
2nd	9:06 – 10:01	8:56 - 9:35	8:56 - 9:41
Break	10:01 - 10:12	9:35 - 9:46	9:41 - 9:52
3rd	10:15 - 11:10	9:49 - 10:28	9:55 - 10:40
4th	11:13- 12:08	10:31 - 11:10	10:43 - 11:28
<u>1st Lunch</u>	12:08 - 12:39	11:10 - 11:41	11:28 - 11:59
5th	12:42 - 1:37	11:44 - 12:23	12:02 - 12:47
5th			
5th	12:11 - 1:06	11:13 - 11:52	11:31 - 12:16
<u>2nd Lunch</u>	1:06 - 1:37	11:52 - 12:23	12:16 - 12:47
6th	1:40 - 2:35	12:26 - 1:05	12:50 - 1:35

*** Dismissal time is at 1:05 p.m. every Thursday**

*** Early dismissal is at 1:35 p.m. on Wednesdays are as follows:**

9/6, 10/11, 11/8, 12/6, 1/10, 2/7, 3/6, 4/10, 5/8

ROTATION SCHEDULE

ROTATION SCHEDULE WILL START AFTER THE FIRST TWO WEEKS OF SCHOOL

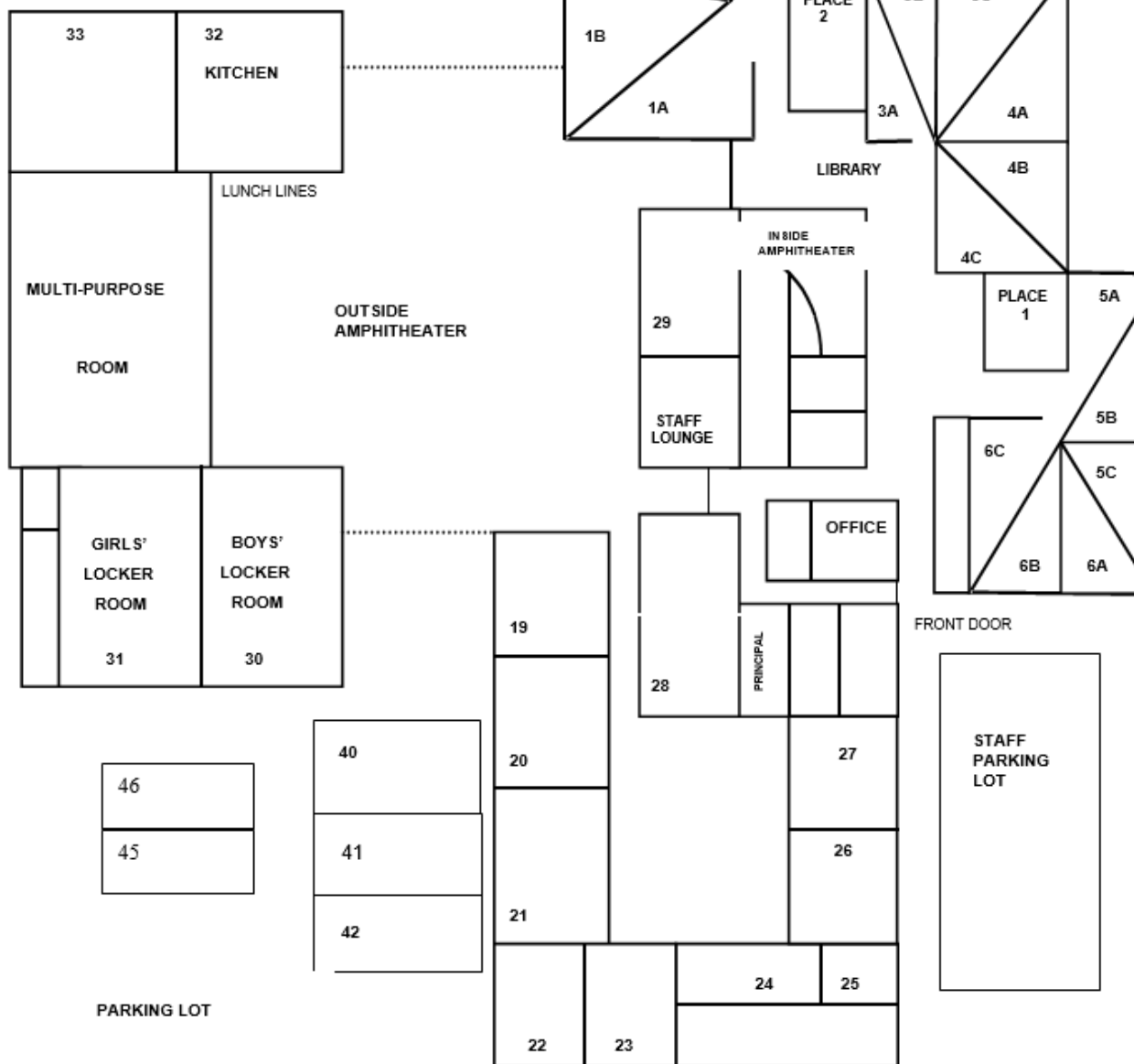
Monday	Tuesday	Wednesday	Thursday	Friday
A	C	E	D	F
B	D	F	C	E
C	E	A	B	D
D	F	B	A	C
<u>E</u>	<u>A</u>	<u>C</u>	<u>F</u>	<u>B</u>
F	B	D	E	A

1st or 2nd LUNCH SCHEDULE

Your 5th period teacher indicates whether you have first or second lunch each day.

	Mon. Tue. Wed. Fri.	Thursday	Early Dismissal Wednesdays
<i>1st Lunch</i>	12:08 - 12:39	11:10 - 11:41	11:28 - 11:59
<i>2nd Lunch</i>	1:06 - 1:37	11:52 - 12:23	12:16 - 12:47

SIERRAMONT
MIDDLE SCHOOL
 3155 KIMLEE DR. SJ 95132
 2021-22



Berryessa Union School District
2023-2024
SCHOOL YEAR CALENDAR
 180 Student Days

Legend	
 First Day of School	 New Teachers Report
 Last Day of School	 All Teachers Report
 Pupil Holidays	 Prof. Dev. Day
() # of Student Days	

July (0)				
M	T	W	T	F
3	4	5	6	7
10	11	12	13	14
17	18	19	20	21
24	25	26	27	28
31				

4- July 4th

August (16)				
M	T	W	T	F
	1	2	3	4
7	8	9	10	11
14	15	16	17	18
21	22	23	24	25
28	29	30	31	

3rd - New Teachers Rprt
 4th - Welcome Back & All Teachers Report
 7th - Prof. Dev. Day
 10th - 1st Day of School

September (20)				
M	T	W	T	F
				1
4	5	6	7	8
11	12	13	14	15
18	19	20	21	22
25	26	27	28	29

4th - Labor Day

October (17)				
M	T	W	T	F
2	3	4	5	6
9	10	11	12	13
16	17	18	19	20
23	24	25	26	27
30	31			

2nd - 6th Fall Break

Board Approved: January 11, 2023

November (15)				
M	T	W	T	F
		1	2	3
6	7	8	9	10
13	14	15	16	17
20	21	22	23	24
27	28	29	30	

1st - Prof. Dev. / No Stds
 10th - Veterans Day
 20th-24th Thanksgiving Brk

December (15)				
M	T	W	T	F
				1
4	5	6	7	8
11	12	13	14	15
18	19	20	21	22
25	26	27	28	29

22nd - 29th Winter Break

January (17)				
M	T	W	T	F
1	2	3	4	5
8	9	10	11	12
15	16	17	18	19
22	23	24	25	26
29	30	31		

1st - 5th Winter Break
 15th - Dr. King Day

February (16)				
M	T	W	T	F
			1	2
5	6	7	8	9
12	13	14	15	16
19	20	21	22	23
26	27	28	29	

19th -23rd President's Week

March (20)				
M	T	W	T	F
				1
4	5	6	7	8
11	12	13	14	15
18	19	20	21	22
25	26	27	28	29

29th - Good Friday

April (17)				
M	T	W	T	F
1	2	3	4	5
8	9	10	11	12
15	16	17	18	19
22	23	24	25	26
29	30			

1st - 5th Spring Break

May (22)				
M	T	W	T	F
		1	2	3
6	7	8	9	10
13	14	15	16	17
20	21	22	23	24
27	28	29	30	31

27th - Memorial Day

June (5)				
M	T	W	T	F
3	4	5	6	7
10	11	12	13	14
17	18	19	20	21
24	25	26	27	28

7th - Last Day of School
 19th- Juneteenth

Sierramont Mission Statement

Our mission at Sierramont Middle School is to provide a learning environment that encourages critical thinking, self-awareness, and students understanding their relationship in their community and the world.

Berryessa Union School District Mission Statement

Berryessa Union School District provides all students the skills to become lifelong learners and successful 21st century global citizens.

Student Expectations

Students are to bring the necessary materials for each class and enter rooms in an orderly manner. Students are expected to follow the health and safety rules as established by the County Department of Health such as wearing appropriate facial coverings and practicing social distancing. Specific classroom rules are established by each teacher. Students are expected to follow these rules and behave in a courteous and respectful manner toward all staff and students. This means all students are expected to **take care of themselves, take care of others, and take care of our school.**

Communication

On-line www.berryessa.k12.ca.us Click “contacts” and find Sierramont Middle School.

Student and parent communications

Mid-semester progress reports are sent home to parents with students through their homeroom. Report cards are printed two times a year. All report cards will be mailed home.

Parents and students may check grades and other student information on Infinite Campus.

Sierramont Information

Pertinent announcements and information will be sent home via email. Please make sure your email address is up to date.

Staff/Student Bulletin

A daily bulletin is read in homeroom regarding student activities.

Community Involvement

Parents volunteer their help in a number of ways at Sierramont and are welcomed and encouraged to assist in the classroom and in school activities and projects.

PTSA

The purpose of the PTSA is to provide an opportunity for parents to participate in:

- raising funds to support school programs and activities
- providing volunteers to serve in areas of need (classrooms, activities)
- meetings are monthly and are open to everyone

School Site Council

Representatives of Sierramont parents, students and staff comprise our School Site Council. They help to give input, review and approve the School Plan for Student Achievement (SPSA), review and approve the school budget, and give input and adopt school policies. Meetings are monthly, and are open to the public.

SCHOOL POLICIES AND PROCEDURES

After School Sports

A full range of boys' and girls' sports is offered during the school year if funds are available. The criteria for participation include 2.0 grade point average, no 'F' grades, along with good behavior and attendance to school and classes. Students on a team must meet the "Eligibility Criteria" for school activities and have medical insurance provided by parents. A participation donation will be requested for each sport.

Arrival and Dismissal

Students should **not** arrive on school campus before 7:30 a.m. nor remain on campus after 2:45 p.m. The first bell rings at 7:55 a.m. and the dismissal bell rings at 2:35 p.m. daily and at 1:05 p.m. on Thursdays. Students are not to remain on campus unless they are participating in school directed activities. Students not involved in an after school directed activity are to leave the campus by 2:45 p.m. (1:15 p.m. on Thursdays).

Attendance

Daily attendance is mandatory, based on the attendance requirements mandated by Senate Bill 727. There are some legitimate reasons for not attending school - illness, a death in the immediate family, doctor or dentist appointments, or a court appearance. Any other absence is considered unexcused and can lead to your student being labeled truant. Once that occurs, we must refer them first to the district office, then to the Santa Clara County Office of Education, and finally the Santa Clara District Attorney's office. To avoid that, please make sure to do the following:

Attendance Guidelines

1. The parent/guardian is requested to call the office at 923-1955 before 9:00 a.m. or call our 24-hour attendance line at 923-1956.
 - a. Make sure to include the student's first and last name, ID number, your first and last name, your relationship to the student, and the reason for absence.
 - b. You have up to 72 hours from the start of your student's absence to call in the absence with a valid reason for it to be excused.
2. If your student is ill for 3 or more days, get a doctor's note confirming the illness (mandatory).
 - a. Your child can email each teacher directly or check his/her Google Classroom to get the classroom assignments and homework.
3. Schedule appointments or vacations after school hours, not during school time. Vacations are not a valid excuse for absence.
4. If you miss school on the day of an after-school activity because of illness, you may not participate in and/or attend the activity.
5. It is the student's responsibility to arrange for assignments missed during an absence.

Attendance Consequences of Unexcused Absences

1. Mandatory student-parent/guardian-social worker-administrator meeting to discuss attendance and impose requirements for student and parent/guardian.
2. Referral to District Office for a Student Attendance Review Board.
3. Referral to the County Office for a Student Attendance Review Board.
4. Referral to the District Attorney's Office to pursue charges related to the welfare of your student.
5. If 10 or more consecutive days are unexcused, student may be dropped and you will be required to re-enroll them.

Independent Study

Students who will be out of school for more than five consecutive days may qualify for an Independent Study contract. Parents must contact the school office at least ten days prior to the anticipated absence to complete the required paperwork.

Truancy/Cutting School

Any student cutting or attempting to cut any part of the school day shall be reported to his/her parents and disciplinary action will be taken. (Ed Code 12401-13).

Tardies and Lates

Each student is responsible for being on time to school and all classes and is expected to be in his/her seat when the class start bell rings. After school detention will be assigned to students for multiple tardies/lates to school or class. A forty five-minute detention will be assigned to students who miss 3 or more homerooms per week. Additional detention will be added when students are late fifteen minutes or more each day to their first period class. Habitual tardiness will become a truancy matter. **Any student who arrives after the end of homeroom (8:05 a.m.) must report to the office before going to class.**

Awards and Recognition

At Sierramont, we are fortunate to work with many outstanding students with a variety of talents and strengths. It is our goal to recognize students for their good work and to reinforce those behaviors that reflect positively on students and contribute to their intellectual growth and well-being. The following awards and recognition are provided: Student of the Month, Athletic Awards, and Academic Awards - School's Honor Roll – GPA of 3.5 – 3.9 and Principal's Honor Roll – GPA of 4.0.

Bicycles, Rollerblades, Scooters, Skateboards (Wheeled Vehicles)

Bike racks are provided for students to park their bike during the school day. All bikes must be licensed and locked in the bike rack before school begins. Bicycles are to be walked on school grounds and parked at the student's risk. Bringing a skateboard, rollerblades, or a scooter to school is a privilege. To keep this privilege, students must safely ride or skate to and from school, avoid riding on any private property or in the middle of the street, and **ABSOLUTELY NO riding on school grounds.** Students who do not meet these requirements will lose their skateboard, rollerblade, or scooter privilege, and will not be allowed to bring the item to school. The school assumes no responsibility for lost or damaged equipment. **By law, students riding a bicycle, skateboard, scooter or rollerblades must wear a helmet. Students must provide their own lock.**

Bills

Students may be billed for lost or damaged library books, lost or damaged textbooks, damage caused to school property, fundraisers not paid, or emergency lunches. Students are expected to pay their bill promptly. Failure to pay will result in restriction from activities until the bill is paid.

Celebrations

Balloons, cakes, and other celebration food items with frosting (such as brownies, cupcakes, etc.) or materials have proved to be disruptive **may not be brought to school**. All balloons, gifts, flowers and celebration food/items brought to school will be confiscated and kept in the office until the end of the school day.

Child Abuse Reporting Law

Penal Code Section 11166 – By law, all employees are required to report suspected child abuse/neglect cases to the proper authorities. Employees are trained annually on abuse reporting requirements.

Closed Campus, Parent Visits, Teacher Conferences

Sierramont Middle School is a closed campus from 7:00 a.m. to 4:00 p.m. Visitors, upon entering the school grounds, shall register in the office and identify themselves and the nature of their business and obtain a visitor's badge. Once students enter the school campus, they may not leave until officially dismissed. A pupil may not leave the school before the end of the school day, except in case of emergency or with the approval of the superintendent. In order for an adult to remove a student from school, the adult must be identified on the student's emergency card, show proper identification, and must sign out the student in the school office. Students who leave campus without permission are subject to disciplinary action. **No student is allowed to bring visitors to school for any reason.**

Parent visits to classrooms or teacher conferences are welcomed and encouraged. Our policy, as a courtesy to teachers, is to arrange visits with at least 24-hour notice. Teachers are available for conferences throughout the school year. Parents/guardians may call the school at 923-1955, email the teacher directly, or send a note to the teacher to arrange an appointment. All visitors must check in at the office before going to a class.

Code of Conduct

BERRYESSA UNION SCHOOL DISTRICT'S NONDISCRIMINATION POLICY BOARD POLICY 0410

The Board of Trustees is committed to providing equal opportunity for all individuals in district programs and activities. District programs, activities, and practices shall be free from unlawful discrimination, including discrimination against an individual or group based on race, color, ancestry, nationality, national origin, immigration status, ethnic group identification, ethnicity, age, religion, marital status, pregnancy, parental status, physical or mental disability, sex, sexual orientation, gender, gender identity, gender expression, or genetic information; a perception of one or more of such characteristics; or association with a person or group with one or more of these actual or perceived characteristics.

SIERRAMONT ZERO TOLERANCE PLEDGE

As a responsible member of the community, I realize that safety at school, home, and in the neighborhood is very important. Understanding the importance of nonviolence at school, home and in our society, and the value of maintaining a drug-free life style, I have pledged my support by doing the following:

- I will not carry dangerous weapons of any type with me at any time. This includes knives, guns, lighters or any other object that could be used to harm a person.
- I will not associate with friends or acquaintances that have weapons and/or participate in violent activities.
- I will not become involved in situations that include fighting or other violent actions.
- I will honor my commitment to live a drug-free life, and will not be pressured by peers to become involved with alcohol, marijuana, vaping, or other illegal drugs.
- I understand that failure to meet the Zero Tolerance expectations at Sierramont Middle School regarding weapons, violence, and drugs, may result in a five-day suspension, a police report, and an expulsion recommendation.

SIERRAMONT SPARTAN CODE OF ETHICS

High standards, integrity and academic honesty will govern a student's behavior throughout the years at Sierramont Middle School. Cheating and/or plagiarism (defined as "one who copies the work of another and passes it off as his/her own") are a violation of ethical standards. Students will do their own work and not be a party to any act considered to be dishonest.

BERRYESSA UNION SCHOOL DISTRICT MIDDLE SCHOOL CODE OF CONDUCT

The following information is intended to present our school rules and regulations clearly. Please read this carefully. All students are expected to understand and follow these guidelines. Students who have been found to commit acts listed under the column labeled **Offense** can expect to be assigned any of the penalties itemized in the column labeled **Consequences**. It should be noted that there might be degrees of severity and/or previous patterns of behavior that will influence the consequences. The school administrator will use his or her discretion in determining those consequences.

Students may be placed in Detention, or other means of correction may be used. This may include: suspensions, student contracts, SARB (School Attendance and Review Board), limited day, home instruction, expulsion recommendation, or off-site alternative education programs to address students who have been disciplined. All school rules and regulations apply to after-school activities and events, as well as going to and coming from school or other schools. Appropriate behavior is expected from all students at school events. Students who choose not to follow the rules will be directed to leave.

Bullying/Cyberbullying

Every student who comes to our school has the right to an environment free from bullying or intimidation. If a student is being bullied or cyberbullied by another student, talk to a counselor or another adult so that the situation can be resolved. **Bullying includes any (repeated) verbal or physical threats or harassment toward another student. Cyberbullying can occur through various methods. It includes any form of verbal threat of physical harm via text messaging, social networks, or any other electronic means. Also, cyberbullying includes creating group chats to spread rumors about people, creating fake accounts to threaten or blackmail, and photo shopping images of people to make them look bad.** If you see someone being bullied or threatened, report it to an adult. We are all responsible for each other's well-being, and you will remain anonymous.

Card Games/Gambling

Gambling, trading, selling of cards (Pokémon, etc.) or other items is strictly prohibited. Violators are subject to disciplinary action.

Cheating/Plagiarism

Taking another person's work (includes information from the Internet) and claiming it as your own is not honest and is not allowed. Students who take or copy another student's work, test, assignment, or students who give their work, test answers, or share the assignment with other students will receive an 'F' grade for the work or test. Discipline may include a referral.

Display of Affection

Students will be expected to maintain an attitude of respect for each other at all times. There is no public display of affection allowed at school. Public displays of affection include: kissing, holding hands, cuddling in corners and such. These actions are not appropriate at school and will result in a conference with both sets of parents and/or disciplinary action.

Gang Symbols or Tags or Graffiti

Any symbol or tag that may be interpreted as symbolic of gang association is prohibited. Specific examples include, but are not limited to: visible gang or “gang-like” tattoos or body drawings, displaying bandanas, wristbands, “rags” or other similar objects, tagging of backpacks, books, personal belongings, or any school property. Graffiti includes drawing on or scratching into desks, walls, in the bathroom and other school property with any object including, but not limited to, pencils, Sharpies, water and such.

Glass Bottles/Containers and Aerosol Cans

Glass bottles containing beverages, perfumes/colognes can break and are not to be brought to school. Deodorant or body sprays in aerosol cans are not allowed at school and are to be left at home. Such items brought to school will be confiscated. Confiscated items may not be returned

Harassment/Hazing

Harassment against persons on the basis of age, color, creed, disability, national origin, race, religion, sex, political affiliation, or sexual orientation will not be tolerated. Harassment is defined as behavior or inappropriate language that would create a hostile, offensive, or intimidating school environment. No student shall be subjected to sexual overtures or conduct (verbal, visual, or physical), which is intimidating, hostile, offensive, or unwelcome. The Berryessa Board of Trustees considers harassment a major offense. Violators will be subject to disciplinary action.

Non-School Items

Students are expected to bring to school only those items that are necessary for school. Items not related to school are to be kept at home, such as (but not limited to) gum, toys, lighters, electronic games, tablets, cameras, guitars, laser pointers, trading cards, toy and water guns, and valuable personal items like jewelry. Students are not to engage in selling, trading, or bargaining items at school. Sale of any items on campus is not permitted. Students involved in sales will have their items confiscated and be subject to disciplinary action. Large amounts of money should not be brought to school. Permanent marker pens (**Sharpies**) will be confiscated and not returned.

Restriction List

The restriction list is based on attendance and behavior (including dress code). Students on the restriction list may not attend any after school sponsored activities, including sports, dances, and concerts. In addition, an athlete will be unable to participate in two consecutive sports while on the restriction list. Students must leave school grounds at the end of their day. The restriction will last for nine weeks in length.

SIERRAMONT MIDDLE SCHOOL DISCIPLINE GUIDELINES

The chart listed below explains major discipline problem areas and the consequences that shall result for those students who have broken school rules.

Offense	Consequence 1 st Occurrence	Consequence 2 nd Occurrence	Consequence 3 rd Occurrence
Arson	5 days suspension; police contact; possible expulsion recommendation		
Assault/Battery	5 days suspension; police contact; possible expulsion recommendation	5 days suspension; expulsion recommendation	
Hazing/peer abuse/Bullying	2 days detention-1-day suspension	1-3 days suspension	5 days suspension
Classroom disruption	Detention; class suspension	2 detentions; class suspension;	School suspension
Cheating	"F" grade for the test or assignment	1-5 days detention	Suspension, Failure of class
Defiance	Detention	2 detentions; school suspension	2-5 days school suspension
Drug paraphernalia	3-5 days suspension; police contact; possible expulsion recommendation	5 days suspension; police contact; expulsion recommendation	
Failure to disperse	1-3 days suspension	3-5 days suspension	
Fighting	3-5 days suspension; police contact	5 days suspension; police contact; possible expulsion recommendation	
Forgery/misrepresentation	2 detentions; 1-day suspension	3 days suspension	5 days suspension; possible expulsion recommendation
Harassment/intimidation	3-5 days suspension; police contact; mediation	3-5 days suspension; same as 1 st occurrence	3-5 days suspension; same as 1 st occurrence
Horseplay	Warning; detention	Detention; parent contact	1-3 days suspension
Inappropriate dress	Clothing change, parent contact	1 detention, parent contact clothing change	Clothing change, parent contact, 9-week restriction list
Look alike weapon knife, firearms, explosive, devices	3-5 days suspension; possible police contact; possible expulsion recommendation	5 days suspension; police contact; expulsion recommendation	Expulsion recommendation
Misuse of Wheeled Vehicles	Confiscation; return at end of day	Confiscation; parent contact; return at end of week	Confiscation; parent contact; return at end of semester
No show to detention	1-3 detentions	3-5 days detention	suspension
Leaving campus without permission and cutting class	1-3 detentions	1-5 days suspension	
Off-campus brought in by police	1-day suspension	2 days suspension	3 days suspension
Possession of controlled substances	5 days suspension; police contact; possible expulsion recommendation	5 days suspension; police contact; Expulsion recommendation	
Possession of and/or electronic transmission of inappropriate sexual content	1-3 days suspension; police contact	3-5 days suspension; police contact	Expulsion recommendation
Possession of tobacco/smoking/vapor pens	1-3 days suspension	3 -5 days suspension	5 days suspension
Profanity	Warning; detention	2 detentions; 1-3 days suspension	3-5 days suspension
Racial Name Calling	1-3 days detention	1-5 days suspension	
Robbery (strong arm, extortion)	5 days suspension, expulsion recommendation		
Sale of drugs	5 days suspension; police contact; expulsion recommendation		
Sexual Assault or Sexual Battery	5 days suspension; police contact; expulsion recommendation		
Theft	Detention; 1-5 days suspension; possible police contact	3-5 days suspension; possible police contact	5 days suspension; possible police contact
Vandalism	3-5 days suspension; possible police contact; possible expulsion recommendation; restitution	5 days suspension; same as 1st occurrence	
Verbal abuse	1-5 days suspension	3-5 days suspension	5 days suspension; possible expulsion recommendation
Videotaping illegal activities	Detention, possible suspension	Detention, 1-3 days suspension	3-5 days suspension
Weapons: knife, firearms, explosive, devices	3-5 days suspension; police contact; expulsion recommendation	5 days suspension; police contact; expulsion recommendation	

Berryessa Union School District is currently updating the behavior matrix. Subject to change.

Counseling and Social Work Services

Our school provides an academic, social, and emotional counseling program for the purpose of guiding students through middle school and preparing them for later life. Counseling services include: individual and group counseling, social skills, conflict mediation, and referrals to community resources. To meet with a counselor or social worker, see a teacher or office staff.

Dances

Dances are held several times throughout the year, usually on a Friday night from 5:30 p.m. until 8:00 p.m. Students are to be picked up by their parents/guardians **at 8:00 p.m.** No student is allowed to leave the dance early and no one is admitted after 6:00 p.m. Admission fees are paid in advance or at the door. All students must have a **current** Sierramont student I.D. card in order to attend any school dance. All school rules, including the dress code, apply at dances. Only Sierramont students may attend our dances. **No guests are permitted.** Students on the Restriction List will not be able to attend dances.

Dress Code

STUDENT DRESS CODE AND GROOMING POLICY 2022-2023

There continues to be a strong correlation between appropriate school dress of students, good work habits, and appropriate school behaviors. Recognizing the relationship between personal dress and personal attitude, students are encouraged to dress in a manner that demonstrates pride both in themselves and in their school.

The following guidelines shall apply to attendance at school and all school activities and events:

- Students are expected to be neat, clean and appropriately attired for school.
- School student ID cards will be issued to students during the first week of school. Student ID cards are needed to purchase or validate items from the Sierramont kitchen at break and lunch, in the library to check out library books, and for admittance to all student activities including student dances. If lost, a replacement ID can be purchased for \$5. **Students must have/wear their IDs/lanyards at all times.**
- Pajamas are not allowed at school, unless it's an approved spirit day.
- Shoes appropriate for school activities must be worn at all times. Closed toe and closed back are to be worn at all times. No slippers, house shoes or shoes with high heels are allowed. Students must have proper shoes for PE (**Crocs, Toms, Ugg and ballet flats are not proper PE shoes**) and students will earn a non-dress for the day if proper footwear is not worn. Non-dress days may adversely affect students' grades.
- Undergarments should be concealed at all times. No see-through fabrics.
- All tops must have sleeves (short, long or cap). **No bare shoulders.**
- Students must be covered from the neckline to the knee. No majority 1 color outfits, such as RED clothing and accessories (including shoes, shoelaces, bandanas, backpacks, etc.)
- No facial piercing(s) that pose a safety risk of any kind.

- Dress, accessories, and jewelry which contain obscene symbols, signs or slogans, and/or which slur or degrade on the basis of race, religion, ethnicity, sex, disability or sexual orientation, contain language or symbols supporting sex, drugs, alcohol, marijuana, tobacco or vaping, and impose a threat of imminent violence or disruption to the orderly operation of the school shall not be worn.
- Full-face masks are not allowed on campus including for Halloween costumes.
- Students appearing on school grounds in violation of the dress code will be counseled and given alternative clothes to wear or, as appropriate, sent home to change clothing or parents may deliver a change of clothing to the site.
- A student who willfully and continuously violates the dress code may be subject to disciplinary action, including but not limited to detention or suspension from school and a nine-week restriction from activities.

Physical Education Classes

All pupils are expected to participate in physical education. If the student has a medical excuse on file with the office and the physical education instructor, a modified program will be provided. Students are expected to dress for P.E. in standard uniform (gym clothes), which is to be laundered every weekend. Students will be assigned lockers for their gym clothes.

Students are responsible to make sure their locks are secured. THE SCHOOL WILL NOT ASSUME RESPONSIBILITY FOR ITEMS REMOVED FROM THE LOCKERS.

Consequences of Dress Code Violations

1. *1st violation* – temporary removal from classes until dress code regulations are met; possible parent contact and possible detention
2. *2nd violation* – temporary removal from classes until dress code regulations are met; parent contact and one hour of detention
3. *3rd violation* – temporary removal from classes until dress code regulations are met; parent contact; detention and a nine - week restriction from activities
4. Additional referrals will be considered willful defiance of district and school policy and suspension or other consequences may be applied.

Individuals or groups of students who have had previous referrals related to gang behavior and/or dress code violations will not be allowed to wear gang-related colors and will be held to a higher standard of conduct.

DRESS CODE OVERVIEW 2023-2024

Students are expected to be neat, clean, and appropriately dressed for school - students must be covered from neck to knee.

Student ID/lanyard: must be worn or available at all times.



Shirts: must have a sleeve (short, long or cap) and fabric must not be see through. No tank tops, muscle shirts, basketball jerseys, spaghetti straps, tube tops, bra straps showing; no undergarments showing.



Shorts, skirts, skorts, dresses: must be at least mid-thigh to the knee all the way around.



Clothing, accessories, jewelry: no inappropriate/offensive graphics, symbols, or expressions.

Pajamas: cannot be worn to school unless it is an approved spirit day.

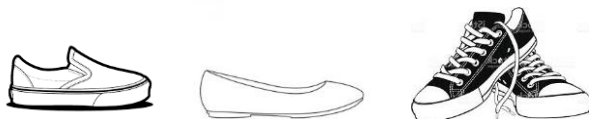


Pants: No undergarments showing.



[This Photo](#) by Unknown Author is licensed under [CC BY-NC-ND](#)

Footwear: no bare feet, open toe or open heel, slippers, slides or flip-flops.



Crocs may be worn with the back strap on.

Crocs are not appropriate for PE. You must wear sneakers for PE.

Emergency Drills

The staff and students participate in fire, earthquake, and lockdown drills. In the event of an emergency, your child will be cared for until you or another adult identified on the student's emergency card comes to sign your child out. Please make sure all information on the emergency card is kept up-to-date. **DO NOT CALL THE SCHOOL.** Our phone lines will be needed to call emergency vehicles. Listen to your radio for instructions and designated emergency shelters. Lockdown drills include "Lockdown/Barricade" and "Shelter in Place." "Lockdown/Barricade" – if we have any reason to believe an intruder is on campus that poses a threat to someone, we would move into "Lockdown/Barricade" mode. Students and staff barricade themselves in the classroom. "Shelter in Place" – if there was a chemical spill or a dangerous animal on campus, students would not be allowed to go outside until it was deemed safe.

Food Delivery

Students are not allowed to order food through delivery apps such as Uber Eats, Door Dash, or Grub Hub during the school day and after school activities. Students are not allowed to collect money from their classmates and/or ask parents to pick up food for multiple students.

Food Service

A full brunch and lunch program are available at Sierramont. For the 2023-24 school year, brunch and lunch will continue to be FREE for all students every day, regardless of their Free or Reduced eligibility status. However, we still encourage you to submit a 2023-24 meal application. If you qualify for Free or Reduced price meals, your child will receive additional benefits. Applications for free and reduced lunch will be mailed to each family in August and are also available in the school office. Students may receive a complete hot meal, purchase individual items from the snack bar, or they may bring their own lunch/snacks from home. No glass containers are allowed at school.

Health Services

Emergency Card – Every student must have a completed, up-to-date emergency card on file in the school office. Please notify the office immediately of any changes to your home address, work address, e-mail(s), or telephone number(s). **Students will be released only to adults listed on the emergency card, and the adult must have proper identification.**

Injury or Illness – Students coming to the office from class must have a pass. The only exception to this is after school, at lunch, or break. Parents/guardians will be contacted should their student have a fever, stomach pains, vomiting, diarrhea, or receive a head injury or other major injury. Parents/guardians must pick up their students. If they cannot be picked up or cannot be contacted, then the school reserves the right to call an ambulance as needed for severe situations. Students with fevers of 99 degrees or higher must remain home until they are fever-free for 24 hours before returning to school without the aid of medications. Students with diarrhea and/or vomiting should NOT be sent to school until they have been free of symptoms for 24 hours without the aid of any medications.

Medications –

The office staff is prohibited by law from giving any medication to students, including over the counter medication. Students are not to carry any medications, with the exception of inhalers. Students who need to carry inhalers for asthma related conditions must **have a medical permit on file in the office.** All medication permits are only good for the school year and must be renewed each year. Medications must be picked up by the last day of school.

Chronic or Long-Term Illness – Parents of students who will be absent 10 or more consecutive days during the school year due to a medical condition are to contact the school. The student's physician must make a request in writing for home teaching; this request is to be made as soon as the physician identifies the need for absences. If a student is absent due to a medical condition for more than 10% of the school year, each absence must be excused by a physician (doctor's note).

Homework

Students are expected to plan for a minimum of one hour of homework per school night, Monday through Thursday. Homework assignments should be recorded each day in the student's Time Tracker. Students and parents may contact teachers for information about assignments posted. Students are expected to understand and follow the Classroom Management Plan of each of their teachers.

Library

Students are encouraged to use the school library. The library is open to all students during the school day and during lunch. Library computers are available to students for research, word processing, and Internet access (must follow rules of the BUSD Technology Agreement). Books can be checked out and returned when due. Students must pay for the replacement of lost library books. Students are also responsible for damage to any book while checked out to them.

Lost and Found

Check for lost items with the teacher, school office, lunch area or the "Lost and Found" bin located in the boys' and girls' locker rooms. Students who have lost an item at school may come after school to check for missing articles. Found items should be turned in to the office.

Progress Reports

At the end of each week, students who are failing a class may ask their teachers to record a grade for the week. Students can pick up a weekly progress report form in the front office on Friday morning. It is the students' responsibility to have teachers record their weekly grade.

Report Cards and Mid Semester Progress Reports

Report cards are mailed home after each semester. Mid-semester progress reports are given to the students during their homeroom class at the end of each reporting period. If a student receives a 'D' or 'F' grade, it is suggested that the parents contact the school so that a conference may be arranged with the teacher to determine how the grade can be improved.

Student Leadership/Council (ASB)

The Sierramont Middle School Student Leadership/Council provides for student activities, facilitates leadership training, promotes the common good for the school, helps solve problems that arise, and plans for the expenditure of student body funds. Student Council is composed of Student Body Commissioners and a Student Body Advisor. Model behavior, attendance, and academic standing are required for all Student Body Commissioners.

Telecommunications Use Agreement

Written parent permission is required for students to use computer equipment connected to the Internet and for Internet access. It is important for parents and students to read and discuss the Telecommunications Use Agreement. It is extremely important that rules be followed. Failure to follow the rules in the Telecommunications Use Agreement will result in the loss of privileges to use school computers and subject to disciplinary action.

Telephone Use/Cell Phones/Handheld Technology

The telephones in the office are for student use only if there is a compelling reason to call home. If a student must contact a parent, he/she may ask a teacher for permission to use the classroom phone. Parents/Guardians are advised to not text, call, or video chat students on their cell phones during school hours, as it is disruptive to their student's and other students' learning. If it is an emergency, please call the office and your student will be called to the office when you arrive. **All cell phones will be stored in students' backpacks during class and passing. Phones may only be out at break and lunch.** Offenses and consequences will be strictly followed. Before school, during break and lunch, and after school, handheld technology will be allowed as long as they follow these guidelines:

1. Students have their parent's permission and as long as the cell phone and headphones/earbuds are kept inside their backpack during class and passing period.
2. No speakers may be used, only headphones/earbuds.
3. No filming/taking photos of others.
 - a. Phones will be confiscated until a parent/guardian meeting is held and items are deleted.
 - b. Depending on the situation, misuse of handheld technology and bullying/harassment consequences may be applied.
4. No calls, texting, messaging, or video chats (lives) of any kind.
5. Videos, websites, apps, music and games are allowed as long as they are school appropriate. Any violation of this will follow the Inappropriate Use of the Internet and the misuse of handheld technology consequences.
6. Once the passing bell rings, phones should no longer be used. Students should not be walking to class while on their phones.
7. Handheld technology and headphones/earbuds are not permitted during after school detention.

If a cell phone is seen or heard during class, it will be confiscated and may be released to the student after school on the following day or only to the parent of the student. The school is not responsible for lost, stolen or damaged phones or electronic handheld devices.

Textbooks

Textbooks will be distributed to each Sierramont student. The first thing the student should do is write, in ink, his/her name on the inside cover of the book and **cover the book**. Each student is responsible for **ALL** books issued to him/her throughout the year. Lost, stolen, or damaged books should be reported to the teacher, and a replacement will be issued. Students will be billed for the damage or loss and financial obligation must be paid by the last day of school. Returned books showing signs of misuse will result in an assessment. The amount of the fine will depend on the extent of the damage.

Time Tracker and Assignments

All students will receive a Time Tracker at the beginning of the year. All students are expected to log the assignments from each class on the daily assignment section in their Time Tracker. Parents should review the assignments with students each evening and, if needed, provide advice on how students should use their time so all of the assignments due the next day are completed. After reviewing the assignments, parents are encouraged to contact the teacher if there are questions. **A replacement Time Tracker, if available, is \$5.**

Traffic Safety

All students must use crosswalks going to and from school. Unsafe behavior puts you and others at risk. Please be sure you look carefully before you cross any street. Students are not allowed to jaywalk.

BEHAVIORAL RESTRICTION: A student may be restricted from all activities for any of the following reasons related to student behavior:

1. Receiving two (2) or more referrals in any nine (9) week period is a cause for restriction from student sponsored school activities for nine (9) weeks. Five (5) or more referrals will result in restriction from all activities for the remainder of the school year and a behavior plan will be developed with the Assistant Principal.
2. Failure to serve an assigned after school detention or school service will result in restriction from school activities, until the detention or school service is served.
3. A one (1) day suspension from school will result in restriction from activities for nine (9) weeks. Students suspended during the last six (6) weeks of the last semester will lose all 8th grade activities. Students suspended a second time during the last semester will be ineligible to participate in all activities for the remainder of the year. This is considered a preliminary step in the expulsion process.
4. Use or possession of drugs, or weapons on campus or at a school activity, or any other expellable offense, will result in restriction from all activities for the remainder of the school year.

ATTENDANCE RESTRICTION:

Nine (9) tardies to school during any (9) weeks grading period is cause for restriction from all activities for the next nine (9) weeks. Three (3) unexcused absences or three (3) unexcused late arrivals (30 min. or more) will result in restriction for nine (9) weeks from the date of the third absence or third late. Cutting will result in restriction for nine (9) weeks from the date of the cut. Two (2) or more cuts will result in restriction for nine (9) weeks from the date of the second cut.

**BERRYESSA UNION SCHOOL DISTRICT MIDDLE SCHOOLS
MORRILL – PIEDMONT – SIERRAMONT**

8th GRADE ELIGIBILITY CRITERIA

Eighth grade students may participate in the promotion ceremony if he/she has the following: higher than a 1.75 cumulative GPA for the 8th grade academic year or a cumulative middle school GPA of 2.0 or above and no suspensions during promotion week.

Middle school sites will communicate to students and the families of students who are in danger of ineligibility at the end of the first semester, at the second semester progress report and the Friday before the promotion ceremony. Families who wish to contest the ineligibility will have to communicate with middle school site administration prior to promotion.